

# EH SERIES Pilot Relief Valves EHDG-01\*-\*\*-\*\*-PNT\*\*-50 1/8, Sub-plate Mounting

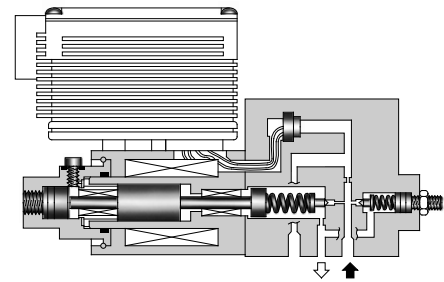
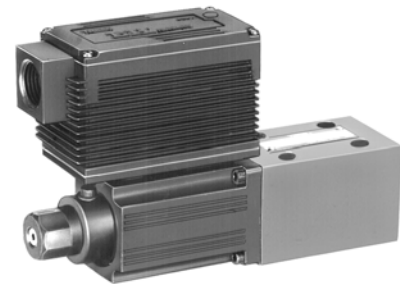
The valve can be used as a pilot valve of the Proportional Electro-Hydraulic Control Valves.

The valve can also be used as a relief valve for the hydraulic system where a small flow rate and continuous pressure control are required.

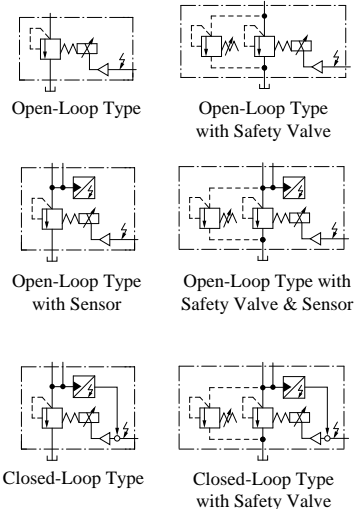
### Specifications

Model Numbers	EHDG-01*
Description	EHDG-01*
Max. Operating Pres.	24.5 MPa (3550 PSI)
Max. Flow	2 L/min (.53 U.S.GPM)
Min. Flow	0.3 L/min (.08 U.S.GPM)
Pressure Adjustment Range	Refer to Model Number Designation
Coil Resistance	10 Ω
Hysteresis	Less than 3% (1%) * <sup>1</sup>
Repeatability	Less than 1% * <sup>2</sup>
Frequency Response	<b>B</b> : 10 (27) Hz * <sup>1</sup> <b>C</b> : 10 (27) Hz * <sup>1</sup> (-90 degree) <b>H</b> : 12 (27) Hz * <sup>1</sup>
Supply Electric Power	24 V DC (21 to 28 V DC Included Ripple)
Power Input (Max.)	28 W
Input Signal	<b>B</b> : 6.9 MPa (1000 PSI) / 5 V DC <b>C</b> : 15.7 MPa (2275 PSI) / 5 V DC <b>H</b> : 24.5 MPa (3550 PSI) / 5 V DC
Input Impedance	10 kΩ
Alarm Signal Output (Open Collector)	Voltage: Max. 30 V DC Current: Max. 40 mA
Pressure Signal Output	<b>B</b> : 5 V DC / 6.9 MPa (1000 PSI) <b>C</b> : 5 V DC / 15.7 MPa (2275 PSI) <b>H</b> : 5 V DC / 24.5 MPa (3550 PSI)
Ambient Temperature	0 - 50°C (32 - 122°F) (With Circulated Air)

\*<sup>1</sup>. The value in ( ) is for the closed-loop type.  
\*<sup>2</sup>. The repeatability of the valve is obtained by having it tested independently on the conditions similar to its original testing.



### Graphic Symbols



### Model Number Designation

EHD	G	-01	V	-B	-S	D	-1	-PN	T15	M10	-50
Series Number	Type of Mounting	Valve Size	Applicable Control	Pres. Adj. Range MPa (PSI)	Control Type	DPM	Safety Valve	P-Line Orifice	T-Line Orifice	P-B Line Orifice	Design Number
<b>EHD</b> : Proportional Electro-Hydraulic Pilot Relief Valve	<b>G</b> : Sub-Plate Mounting	<b>01</b>	<b>None</b> : For general use <b>V</b> : Vent Control of Relief Valve (Omit if not required)	<b>B</b> : 0.5 - 6.9 (70 - 1000) <b>C</b> : 1 - 15.7 (145 - 2275) <b>H</b> : 1.2 - 24.5 (175 - 3550)	<b>None</b> : Open-Loop <b>S</b> : Open-Loop with Sensor <b>L</b> : Closed-Loop* <sup>1</sup>	<b>None</b> : Without DPM <b>None</b> : Without DPM <b>D</b> : With DPM	<b>None</b> : Without Safety Valve <b>1</b> : With Safety Valve	<b>PN</b> : Without Orifice (Standard)	<b>T15</b> <b>T13</b> <b>T11</b> * <sup>2</sup>	<b>M10</b> : Standard Orifice	<b>50</b>

\*<sup>1</sup>. For closed-loop models, specify applicable control code "V" even though the valve may not be used as vent control of relief valve.  
\*<sup>2</sup>. Standard of T-line Orifice. Pres. Adj. Range B: T15, C: T13, H: T11.

