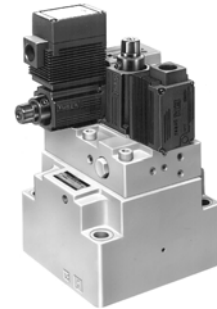


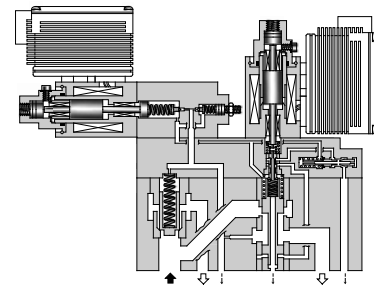
These are proportional electro-hydraulic flow control valves having functions for controlling the direct electric current of metre-in type and for pressure control. They are energy-saving valves for supplying the minimal pressure and flow required to operate actuators.



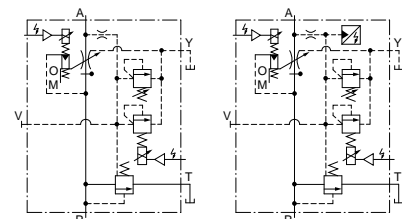
Specifications

Model Numbers		EHFBG-03- ⁶⁰ / ₁₂₅	EHFBG-06-250	EHFBG-10-500	
Description					
Max. Operating Pressure MPa (PSI)		24.5 (3550)	24.5 (3550)	24.5 (3550)	
Max. Flow		60 : 60 (15.8) 125 : 125 (33)	250 (66)	500 (132)	
Metred Flow Capacity		60 : 1-60(.26-15.8) 125 : 1-125(.26-33)	2.5-250 (.66-66)	5-500 (13.2-132)	
Min. Pilot Pressure MPa (PSI)		1.5 (215)	1.5 (215)	1.5 (215)	
Pilot Flow	at Normal	1 (.26)	1 (.26)	1 (.26)	
	at Transition	3 (.79)	4 (1.06)	6 (1.59)	
Differential Pressure MPa (PSI)		0.6 (85)	0.7 (100)	0.9 (130)	
Flow Controls	Hysteresis	Less than 3%			
	Repeatability	Less than 1% *			
	Input Signal	Max. Flow / 5 V DC			
	Coil Resistance	10 Ω			
	Supply Electric Power	24 V DC (21 to 28 V DC Included Ripple)			
	Input Impedance	10 kΩ			
	Power Input (Max.)	28 W			
Pressure Controls	Pres. Adj. Range MPa (PSI)	Adj. Range: C	1.2-15.7 (175-2275)	1.4-15.7 (200-2275)	1.5-15.7 (215-2275)
		Adj. Range: H	1.4-24.5 (200-3550)	1.4-24.5 (200-3550)	1.5-24.5 (215-3550)
	Hysteresis		Less than 2%		
	Repeatability		Less than 1% *		
	Coil Resistance		10 Ω		
	Input Signal		Max. Operating Pres. / 5 V DC		
	Supply Electric Power		24 V DC (21 to 28 V DC Included Ripple)		
	Input Impedance		10 kΩ		
Power Input (Max.)		28 W			
Output Signal		C : 5 V DC / 15.7 MPa (2275 PSI) H : 5 V DC / 24.5 MPa (3550 PSI)			
Ambient Temperature		0 - 50°C (32 - 122°F) (With Circulated Air)			

* The repeatability of the valves is obtained by having it tested independently on the conditions similar to its original testing.

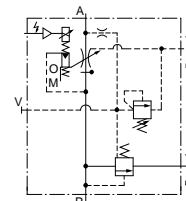


Graphic Symbols



Models with Proportional Pilot Relief Valves

Models with Proportional Pilot Relief Valves and Sensor



Models without Proportional Pilot Relief Valves



External Pilot Pres. Connection

Model Number Designation

EHFB	G	-03	-60	-C	-E	-S	D	-50
Series Number	Type of Mounting	Valve Size	Max. Metred Flow L/min (U.S.GPM)	Pilot Relief Valve Pres. Adj. Range	Pilot Connection of Flow Control	Pressure Controls	DPM of Pres.*	Design Number
EHFB : Proportional Electro-Hydraulic Flow Control and Relief Valve	G : Sub-Plate Mounting	03	60 : 60 (15.8) 125 : 125 (33)	None : Without Proportional Pilot Relief Valve	None : Internal Pilot E : External Pilot	None : Open-Loop S : Open-Loop with Sensor	None : Without DPM D : With DPM	50
		06	250 : 250 (66)					50
		10	250 : 500 (132)	C, H : See Specifications				50

* DPM is available only for the models with Pressure Controls "S".

