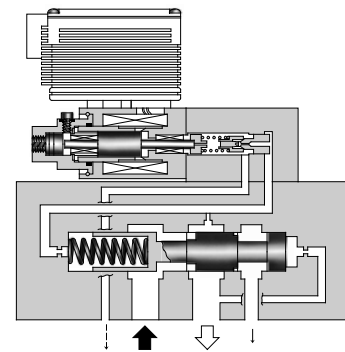
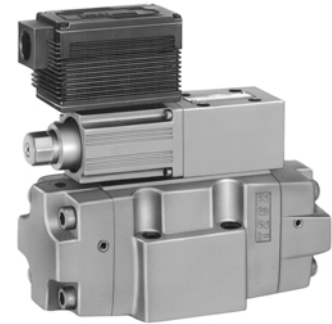


These valves consist of a small size but high performance electro-hydraulic proportional pilot relief valve and reducing valve with relief function. The valves control the system pressure proportionally through a controlled input voltage. Moreover, a good response speed in reducing the pressure even at a large load capacity can be obtained with the relief function of the valves.



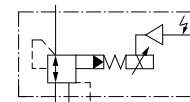
Specifications

Model Numbers	EHRBG-06	EHRBG-10
Description		
Max. Operating Pres.	24.5 MPa (3550 PSI)	
Max. Flow	100 L/min (26.4 U.S.GPM)	250 L/min (66 U.S.GPM)
Max. Relieving Flow	35 L/min ^{★1} (9.24 U.S.GPM)	15 L/min ^{★1} (3.96 U.S.GPM)
Pressure Adjustment Range	Refer to Model Number Designation	
Coil Resistance	10 Ω	
Hysteresis	Less than 3%	
Repeatability	Less than 1% ^{★2}	
Frequency Response	B : 4 Hz C : 3 Hz (-90 degree) H : 3 Hz	
Supply Electric Power	24 V DC (21 to 28 V DC Included Ripple)	
Power Input (Max.)	28 W	
Input Signal	B : 6.9 MPa (1000 PSI) / 5 V DC C : 13.7 MPa (2000 PSI) / 5 V DC H : 20.6 MPa (3000 PSI) / 5 V DC (at Flow Rate Zero)	
Input Impedance	10 kΩ	
Pressure Signal Output	B : 5 V DC / 6.9 MPa (1000 PSI) C : 5 V DC / 13.7 MPa (2000 PSI) H : 5 V DC / 20.6 MPa (3000 PSI)	
Ambient Temperature	0 - 50°C (32 - 122°F) (With Circulated Air)	

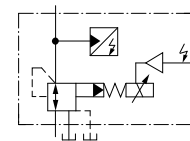
★1. The figures shown are those obtained where the differential pressure between the secondary pressure port and tank port is 14 MPa (2030 PSI).

★2. The repeatability of the valve is obtained by having it tested independently on the conditions similar to its original testing.

Graphic Symbols



Open-Loop Type



Open-Loop Type with Sensor

Model Number Designation

EHRB	G	-06	-C	-S	D	-50
Series Number	Type of Mounting	Valve Size	Pres. Adj. Range MPa (PSI)	Control Type	DPM	Design Number
EHRB: Proportional Electro-Hydraulic Reducing & Relieving Valve	G: Sub-Plate Mounting	06	B : 0.8 - 6.9 (115 - 1000) C : 1.2 - 13.7 (175 - 2000) H : 1.5 - 20.6 (220 - 3000)	None: Open-Loop	None: Without DPM	50
		10	B : 0.9 - 6.9 (130 - 1000) C : 1.2 - 13.7 (175 - 2000) H : 1.5 - 20.6 (220 - 3000)	S: Open-Loop with Sensor	D: With DPM	50

